



Health Safety & Environment

Mount Gay Distilleries Ltd.

July 3rd, 2017

AIM

To develop a Health, Safety and Environmental Culture and awareness at the Company to have buy in from both Management and Staff and be compliant with Local & International legislation and Corporate specifications.

SITUATION

The Company has already taken measures in implementing and complying with the Health and Safety requirements which aligns with local legislation (SHaW Act 2005) as well as Corporate requirements in the form of Corporate Social Responsibility (CSR).

Highlights

- HS & E Policy
- HS & E Committee – Multidisciplinary Team
- Emergency Preparedness Plan
- Permits to Work
- Accident/ Incident forms, reports and tracked action plans
- HSE Manual
- Quarterly HSE GMP Inspections with Tracked Action Plans

Highlights

Documentation to generate General register (boiler certificates, fire inspection certificates, all accident/incident reports etc.).

Highlights

Training

- Lab Safety Manual
- Chemical Management & Safety
- Job Safety Analysis Form
- First Aid Training
- Safety Officer Training
- Contractor assessment form
- Permit to Work System and use of permits

Signage & civil work

- Increased exit & emergency exit signs at all locations (on-going)
- Painting of no parking zones, hatching on loading dock & car spaces

Highlights

Signage & civil work

- Fire exit door in Distribution center
- Cutting of emergency exit gates and stairs and ramp placement (on-going)
- Increased size of assembly point area at Brandon
- BFS inspection certificates received for all locations
- Additional PPE
- Fire alarm installation at Distillery (on-going)

Highlights

Increased Signage/Labeling - Increased Safety Signage at Brandon's and Distillery, Clean & Green Signage, Labeling of waste bins, operational lines, Lab facilities

Safety Boards – To display key HSE Info & Updates, Site Safety Poster Boards (on-going)

New Documents/Forms – PPE Tracking Form, JSA Form, Glass Breakage Form, First Aid Box Form

Risk Assessments – Task specific

Highlights



Safety Board



Labeled waste bin

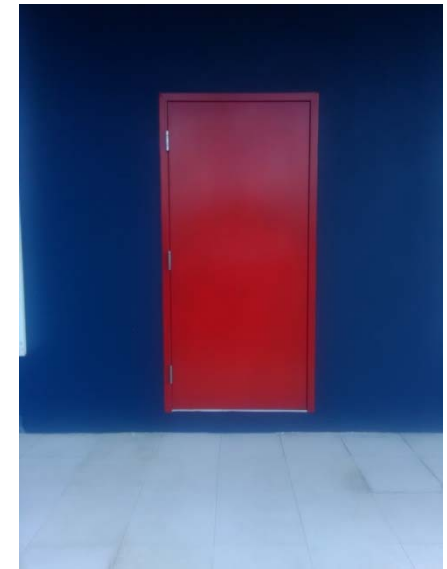
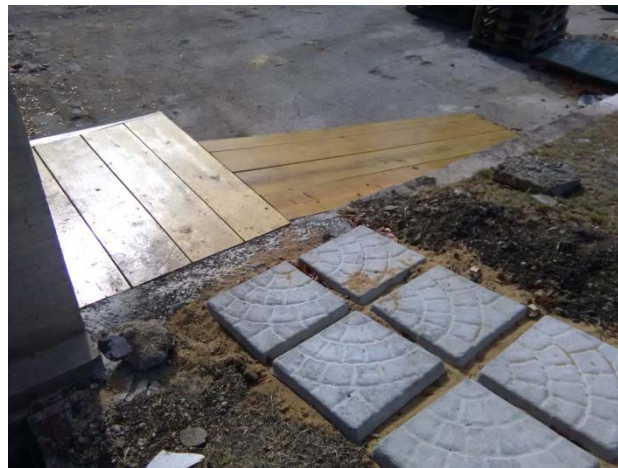
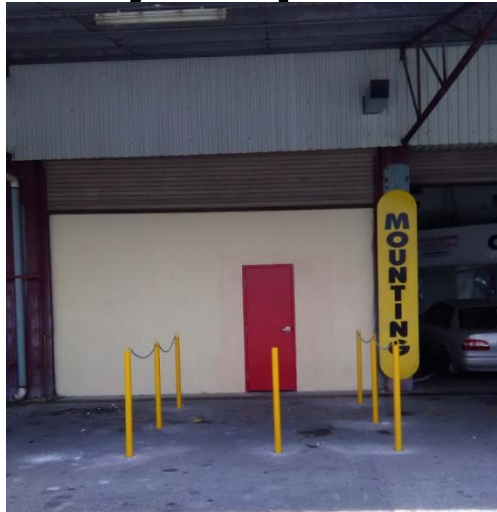
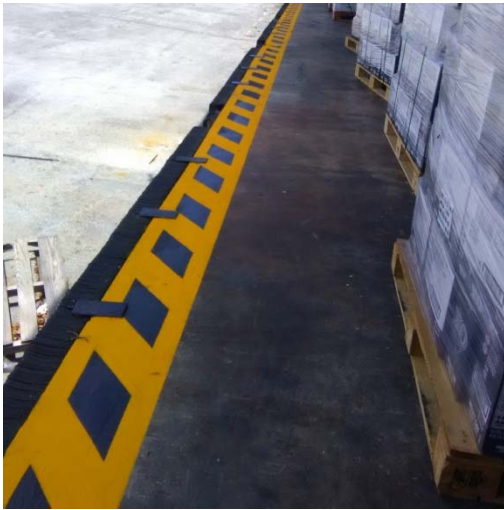


Clean and Green Sign



"Watch your Step" sign

Safety Updates



Highlights



“Low Clearance” Sign in Column Still



Open vent in Pot Still



Caged gas cylinders

PLAN

- ✓ Ensure HS & E action items are being assessed and completed as well as actions derived from all accidents/incidents are investigated
- ✓ Continue to communicate and conduct HS & E training and sensitization sessions with all staff members with regards to job function and general safety in their environment
- ✓ Continual improvement of the system
- ✓ We also take care of the wellness of our employees by granting a wellness allowance to each staffer.

The background of the slide features a light beige or tan color with a faint, stylized illustration of several spools of thread. The spools are arranged in a row, with some in the foreground and others receding into the background. The illustration uses horizontal lines to represent the thread on the spools and is rendered in a sketchy, artistic style.

END

THANK YOU
